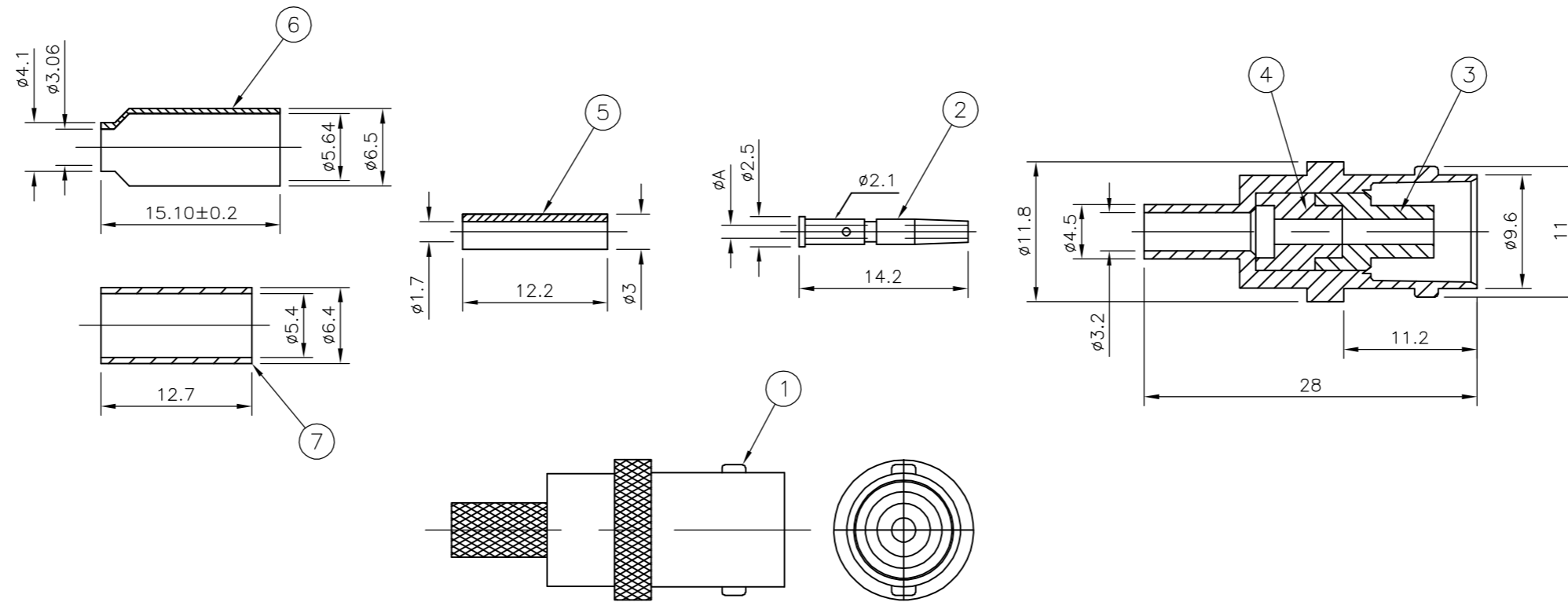


THIS DRAWING IS UNPUBLISHED. RELEASED FOR PUBLICATION JUNE , 2004.
 © COPYRIGHT 2004 BY TYCO ELECTRONICS CORPORATION. ALL RIGHTS RESERVED.

LOC	DIST	REVISIONS					
E	B	P	LTR	DESCRIPTION	DATE	DWN	APVD
			B		ECR-05-006587	18AUG05	JMS
				9-1478242-0	RG58C/U, 141A/U, URM43, 76, BELDEN 9907, KX 15		5-1634511-3
				9-1478242-0	RG58C/U, 141A/U, URM43, 76, BELDEN 9907, KX 15		5-1634511-2
				9-1478242-0	RG174A/U, 188A/U, 316/U, URM95, KX 3B, KX 22A		5-1634511-1
				9-1478242-0	RG174A/U, 188A/U, 316/U, URM95, KX 3B, KX 22A		5-1634511-0
DIMENSIONS				A	DIE SET	CABLE GROUPS	PART NO.

- NOTES
- 1 SINGLE PACK IN ACCORDANCE WITH AMP SPEC 107-3275
 - 2 100 TRAY PACK IN ACCORDANCE WITH AMP SPEC 107-3275
 - 3 Au PLATING OVER Ni PLATING OVER Cu PLATING
 - 4 Ni PLATING OVER Cu PLATING
 5. HAND TOOL: 9-1478240-0
 6. DIE SET: SEE TABLE
 7. CHARACTERISTICS
 FREQUENCY RANGE: DC-4GHz
 NOMINAL IMPEDANCE: 50 OHMS
 INSULATION RESISTANCE: 5000 MOHMS
 DIELECTRIC WITHSTAND VOLTAGE: 500V RMS
 TEMPERATURE RATE: -55°C TO +85°C
 CONTACT RESISTANCE:
 CENTRE CONTACT 1.5 mOHMS
 OUTER CONTACT 1.0 mOHMS
 8. MECHANICAL CHARACTERISTICS
 DURABILITY: 50 CYCLES
 9. FOR TECHNICAL DATA REFER TO YOUR LOCAL TYCO ELECTRONICS SALES OFFICE
 10. ALL DIMENSIONS ARE NOMINAL FOR REFERENCE ONLY UNLESS OTHERWISE STATED



QTY	UNIT	QTY	UNIT	MATERIAL	DESCRIPTION	ITEM
1	1	-	-	BRASS	CRIMP SLEEVE	7
-	-	1	1	BRASS	CRIMP SLEEVE	6
-	-	1	1	NYLON	PUSHER SLEEVE	5
1	1	1	1	POLYMETHYLPENTENE	INSULATOR	4
1	1	1	1	POLYMETHYLPENTENE	INSULATOR	3
1	1	1	1	PHOSPHOR BRONZE	CONTACT	2
1	1	1	1	ZINC ALLOY	BODY	1
5	35	2	15	MATERIAL	DESCRIPTION	ITEM

THIS DRAWING IS A CONTROLLED DOCUMENT.		DWN J.SANDWELL 16JUN04	Tyco Electronics Corporation Bideford, UK, EX39 4HE	
DIMENSIONS: mm		CHK S.PARLOW 16JUN04	NAME F.WHEELER-KING	
TOLERANCES UNLESS OTHERWISE SPECIFIED		APVD F.WHEELER-KING 16JUN04	PRODUCT SPEC 108-3435	
0 PLC ±		APPLICATION SPEC SEE SHEET 2		
1 PLC ±		SIZE A2		
2 PLC ±		CAGE CODE 00779		
3 PLC ±		DRAWING NO C=1634511		
4 PLC ±		RESTRICTED TO -		
ANGLES ±		SCALE NTS		
FINISH SEE TABLE		SHEET 1 OF 2		
MATERIAL SEE TABLE		REV B		
FINISH SEE TABLE		CUSTOMER DRAWING		

THIS DRAWING IS UNPUBLISHED. RELEASED FOR PUBLICATION JUNE , 2004.
 © COPYRIGHT 2004 BY TYCO ELECTRONICS CORPORATION. ALL RIGHTS RESERVED.

LOC		DIST		REVISIONS			
P	LTR	DESCRIPTION		DATE	DWN	APVD	
-	-	SEE SHEET 1		-	-	-	

COMPONENTS

MAIN BODY (ITEM 1, 3, & 4)	CONTACT (ITEM 2)	PUSHER SLEEVE (ITEM 5)	CRIMP FERRULES (ITEM 6 & 7)

ASSEMBLY INSTRUCTION

CABLES: RG58C/U, 141A/U, URM43, 76, BELDEN 9907, KX 15	CABLES: RG174A/U, 188A/U, 316/U, URM95, KX 3B, KX 22A
<p>STEP 1</p> <p>1. SLIDE METAL CRIMP FERRULE OVER CABLE</p>	<p>STEP 1</p> <p>1. SLIDE METAL CRIMP FERRULE OVER CABLE</p>
<p>STEP 2</p> <p>1. STRIP CABLE TO DIMENSIONS AS SHOWN</p>	<p>STEP 2</p> <p>1. STRIP CABLE TO DIMENSIONS AS SHOWN</p>
<p>STEP 3</p> <p>1. FIT CONTACT OVER CENTRE CONDUCTOR TO BUTT AGAINST DIELECTRIC. 2. CRIMP USING TOOL AS NOTES ON PAGE 1.</p> <p>RECOMMENDED CENTRE CONTACT A/F HEX</p>	<p>STEP 3</p> <p>1. SLIDE ITEM 10 PUSHER SLEEVE OVER DIELECTRIC BEFORE FITTING THE CONTACT. 2. FIT CONTACT OVER CENTRE CONDUCTOR TO BUTT AGAINST DIELECTRIC. 3. CRIMP USING TOOL AS NOTES ON PAGE 1.</p> <p>PUSHER SLEEVE UNDER BRAID</p> <p>RECOMMENDED CENTRE CONTACT A/F HEX</p>
<p>STEP 4</p> <p>1. PRESS SUB-ASSEMBLY INTO BODY, UNTIL CONTACT IS FULLY LOCATED BY AN AUDIBLE CLICK. 2. ENSURE THAT KNURLED HOUSING INSERTS BETWEEN THE DIELECTRIC AND CABLE BRAID.</p> <p>HOUSING END UNDER BRAID</p>	<p>STEP 4</p> <p>1. PRESS SUB-ASSEMBLY INTO BODY, UNTIL CONTACT IS FULLY LOCATED BY AN AUDIBLE CLICK. 2. ENSURE THAT KNURLED HOUSING INSERTS BETWEEN THE PUSHER SLEEVE AND CABLE BRAID.</p> <p>HOUSING END UNDER BRAID</p>
<p>STEP 5</p> <p>1. SLIDE CRIMP FERRULE ALONG THE CABLE UNTIL IT BUTTS AGAINST THE HOUSING BODY. 2. CRIMP USING TOOL AS NOTED ON PAGE 1. 3. CRIMP DIMENSION AS SHOWN.</p> <p>RECOMMENDED CRIMP SLEEVE A/F HEX</p>	<p>STEP 5</p> <p>1. SLIDE CRIMP FERRULE ALONG THE CABLE UNTIL IT BUTTS AGAINST THE BODY HOUSING. 2. CRIMP USING TOOL AS NOTED ON PAGE 1. 3. CRIMP DIMENSION AS SHOWN.</p> <p>RECOMMENDED CRIMP SLEEVE A/F HEX</p>

THIS DRAWING IS A CONTROLLED DOCUMENT.		DWN J.SANDWELL 16JUN04	Tyco Electronics Corporation Bideford, UK, EX39 4HE														
DIMENSIONS: mm		CHK S.PARLOW 16JUN04															
TOLERANCES UNLESS OTHERWISE SPECIFIED		APVD F.WHEELER-KING 16JUN04	NAME														
<table border="1"> <tr><td>0 PLC</td><td>±</td></tr> <tr><td>1 PLC</td><td>±</td></tr> <tr><td>2 PLC</td><td>±</td></tr> <tr><td>3 PLC</td><td>±</td></tr> <tr><td>4 PLC</td><td>±</td></tr> <tr><td>ANGLES</td><td>±</td></tr> <tr><td>FINISH</td><td>±</td></tr> </table>		0 PLC	±	1 PLC	±	2 PLC	±	3 PLC	±	4 PLC	±	ANGLES	±	FINISH	±	PRODUCT SPEC 108-3435	BNC STRAIGHT JACK CRIMP
0 PLC	±																
1 PLC	±																
2 PLC	±																
3 PLC	±																
4 PLC	±																
ANGLES	±																
FINISH	±																
MATERIAL SEE TABLE		APPLICATION SPEC SEE SHEET 2	50 OHM														
FINISH SEE TABLE		WEIGHT -	SIZE A2														
		CUSTOMER DRAWING	CAGE CODE 00779														
			DRAWING NO C=1634511														
			RESTRICTED TO -														
			SCALE NTS SHEET 2 OF 2 REV B														

1634511

A